

Roland®



# ROLAND CLASSIC

C-330 / C-230 / C-30



# State-of-the-Art Technology Brings Classical Instruments of the Renaissance and Baroque Eras Back to Life.

These include pipe organs that filled cathedrals with stately sound,  
harpsichords that were a staple in court music,  
positive organs that allured the audience in theaters and salons,  
and fortepiano for which many masterpieces were composed.

A world leader in cutting-edge technology,  
Roland has captured and refined these classical instruments, bringing them to the modern age  
in the form of instruments that are a true joy to play.

Travel back through the centuries and enjoy classic, elegant, and timeless sound.  
Enjoy unsurpassed luxury with the Roland Classic Series.



## ∞ ROLAND CLASSIC SERIES LINEUP ∞



Bring the grandeur of a pipe organ to your home.

Classic Organ  
**C-330**



Experience a variety of classical instruments in one compact package.

Classic Keyboard  
**C-230**



Enjoy the beautiful sounds of the Baroque era.

Digital Harpsichord  
**C-30**



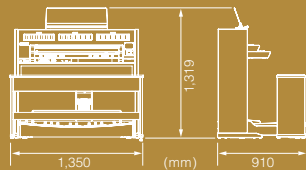
Classic Organ

# C-330

## Majestic Pipe-Organ Sound for Your Home.

### Enjoy larger-than-life performance in a compact instrument.

The C-330 delivers grand, magnificent sound that defies its compact size. Its body is only 53.7cm deep (91cm deep including pedalboard). It features a dual-manual keyboard with 61 keys each plus 30 footpedals in a parallel-concave configuration. With a wide variety of high-quality organ tones, the C-330 sets the bar high for sound and performance. Experience pipe-organ power and performance whenever inspiration strikes.



### The ultimate organ sound — delicate and expressive.

At the heart of C-330 is Roland's newly developed sound module that faithfully reproduces the elements that make up the tone of acoustic pipes, including air pressure sent from the wind chest, slight variations in pitch that create full-bodied harmonies, and undulations produced by pipes as they generate sound. Creates natural and real tones. Enables phrasings that have been difficult to reproduce in the past, such as variations in how attack and decay respond to subtle differences in touch. Dramatically more expressive.

### Bring the sound of cathedrals to your living room with Roland's proprietary RSS ambience system.

The rich, full tone of pipe organs is created by sounds reverberating inside a building. Such tone is generated by a powerful musical instrument, of which the room itself is a part. This is what Roland's RSS\* ambience system reproduces. Users simply define the location, or parameters such as wall material, to create the realistic reverberations of a cathedral, stone church, or concert hall.

\* RSS: Roland Sound Space

### True pipe-organ power. Surround the audience with cascading sound.

The rich reverberation created by vibrating pipes creates a powerful, multi-sensory sound. These unique tones are the result of pipes that are custom designed and fine-tuned for each location. The C-330 makes it easy to reproduce these coveted tones in your home. Install the included satellite speakers in the ceiling or on the wall to create a soundscape that sounds as if real pipes. You can feel the cascading tones and rich, vibrant sound as you play.

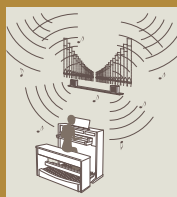


Illustration of satellite speakers in use.

### Keyboard touch is true to a real pipe organ.

The keyboard faithfully reproduces the key touch of tracker-actions that are widely used in pipe organs. Capable of conveying the subtlest nuances created by differences in touch, the keyboard perfectly responds to the performers' emotions and sensitivities. The keyboard even reproduces the resistance from air pressure that occurs immediately before the pallet opens when a key is pressed, as well as the releasing sensation when it opens.

#### What is a tracker-action?

It is a type of keyboard action that was developed in the Baroque period. This mechanism makes use of the principle of leverage, pulling a thin wooden rod (tracker) when a key is pressed down, thereby opening the pallet (valve) to send air into the pipe. This action has been popular among organists for its quick response.

### Includes a variety of organ tones from different periods and countries.

Pipe organs are known by different names and have different styles of pipes depending on their period and region. A variety of organ pieces have been written for these specific styles. The organ tones onboard the C-330 each come with four variations (voice pallets) covering a wide range of styles and tastes. Enjoy on a variety of different organs ranging from Baroque organs of the 17th and 18th centuries, on which Bach wrote his masterpieces, to large romantic organs that were used in concerts in the 19th and early 20th centuries.

### Easily switch to pitches and classical temperaments that are characteristic of classical instruments.

Supports four types of pitches, including the Baroque pitch, that are characteristic of classical instruments, as well as equal temperament and eight classical temperaments. Transform the instrument with the touch of a button, and perform different pieces in the tuning used during that specific period. The C-330 also offers an easy way to fine-tune its pitch to match other instruments.

### Use shortcuts to make basic settings. Easy to customize.

The C-330 features shortcuts to help you access essential settings without complex operations. By simply pressing the SET piston (button) and touching the item that you wish to configure, you can bring up the related settings on the main LCD. For example, if you want to change the pitch, you would press SET and touch the keyboard; the "Pitch/Tuning" screen will appear.



### Equipped with a recorder. Supports USB memory.

The C-330 is equipped with a built-in recorder for recording and playing back your performance. You can store your performance on the unit itself or on USB memory.\* You can also store combinations of your favorite tones on USB memory.

\*Roland's USB Flash Memory key recommended.



C-230 with optional  
BNC-29 bench.

Classic Keyboard

# C-230

Classic Organ, Harpsichord, Fortepiano ...

Enjoy Your Favorite Classical Instrument Anytime, Anywhere.

## A diverse collection of coveted classics in one compact instrument.

Based on the positive organ\* which was popular in the Baroque period, the C-230 has a wide range of classical instruments onboard, including the delicate and beautiful tones of harpsichord, fortepiano (an instrument that Beethoven is said to have used), and the adorable tones of celesta. The main sounds are accessible via dedicated front-panel buttons so you can instantly perform with your favorite classical instrument by simply pressing a button.

\*Small pipe organ. These instruments were played in smaller churches and in the court.

### Onboard tones

Organ (36 organs [9 buttons x 4 variations]), 8 organ basses [2 buttons x 4 variations], 4 harpsichord [8' I, 8' II, 4', lute], 2 fortepianos, and 18 types of other instruments (celesta, chimes, etc) [2 buttons x 9 types].



## Perform a variety of organ pieces with a wide range of tones.

The C-230 is equipped with nine types of organ tones, including four types of variations for each tone. Instantly select tones for different periods, regions, and styles with simple button operation. You can also combine multiple tones to create a diverse range of sounds. Use tones that match a variety of organ pieces.

## Ideal for ensemble performances. Create beautiful harmony with other musicians or a choir.

With its ability to produce a wide range of classical instrument tones, the C-230 is a versatile addition to an ensemble. Blending with other instruments is easy, as the C-230 offers you all the latitude for adjusting volume and pitch. Create the perfectly balanced ensemble.

## Create rich sounds as if playing in a church or hall.

The C-230 is equipped with reverb processor and a dedicated knob for instant control. Add beautiful reverb to your performances that sounds as lush and grand as a cathedral. Adjust the ambience to your preference — from a small salon to huge hall without leaving your living room.

## While compact in size, C-230 delivers enough volume to fill a recital hall. It also creates a sense of spatial depth that's characteristic of pipes.

While compact in size, the C-230 and its built-in speaker are powerful enough to fill a medium-sized hall. Sound quality remains high whether played at soft or loud volume levels. Enjoy your performance with pristine audio quality. The C-230 also comes with satellite speakers for creating spatial, pipe-organ-quality soundscapes. Install the included satellite speakers in the ceiling or on the wall to experience a cascade of sound and reverberation.



## Switch to pitches and classical temperaments with a touch of a button.

It's like having a collection of classical instruments at your fingertips. The C-230 supports three types of pitches and five types of tunings used in classical music, including Baroque and Versailles pitches. Since you can switch between these with a touch of a button, you can choose different tunings for each piece you play.

## Simple controls enhance creativity and musical enjoyment.

The number of buttons on the C-230's front panel has been kept to a minimum to create an easy-to-use operation panel. The design and layout is logical and easy to understand at a glance. Even first-time users can enjoy stress-free playing. Simply by pressing respectively marked buttons, you can choose tones, play back prerecorded pieces, or record your performances.

## Equipped with a recorder for capturing your performances. Supports USB memory.

The C-230 has a built-in recorder for recording and playing back your performance. You can store your performance internally or on USB memory.\*

\*Roland's USB Flash Memory key recommended.

## Compact and beautiful exterior. Detachable stand for portability.

The C-230's beautiful cabinet is finished with a simulated mahogany finish that provides it a warm feel. You can also customize your stand with an optional stained-glass panel. In addition to being lightweight and compact, the C-230 allows the stand to be detached for easy portability. Perform in a wide variety of settings, including recitals and home parties.

\*Decoration panel OP-C30DP series. Please see p.10 for details.



C-30 with optional  
BNC-29 bench.

Digital Harpsichord

# C-30

**Experience the Elegance of Baroque Music —  
the Harpsichord Reborn as a Modern Instrument.**

**Simple and beautiful design is a perfect match  
for the modern home interior.**

The C-30 was modeled after a square-type of harpsichord called a virginal, and takes up little space. In addition to its simple, elegant, and traditional form, its beautiful wooden cabinet with simulated mahogany matches a wide variety of home interiors, from classic to simple modern. Turn any space — your home, a hall, or restaurant — into an exquisite environment filled with music. The pattern (mosaic) on the inside of the keyboard lid and the simulated stained-glass panels on both stands are standard. The panels can be easily replaced with separately sold alternative picture boards and decoration panels\* to suit your interior furnishings.



Fitted with separately sold decoration panels.

\*Please see p.10 for details.

**The C-30's subtle keyboard touch is a result of Roland's  
painstaking pursuit of authenticity.**

The C-30 is equipped with a new keyboard developed specially for the harpsichord, which reproduces subtle feeling of a plectrum (pick) plucking the string. Just as in an acoustic harpsichord, the C-30's keyboard offers a very light touch and some "play" in its keystroke before the plectrum plucks the string. The distance to the keys' fulcrums are longer, giving a relative uniform touch regardless of where on the key the player presses. This dramatically improves playability. The front ends and flat tops of the black keys have been designed to mimic that of a harpsichord. With a matte finish, they are also pleasant to the touch. Every detail has been captured — the sense of depth when the keys are pressed down, the soft feel when they are fully pressed down, and the harpsichord's characteristic after-tones when the keys are released. With a keyboard that was designed with meticulous attention to detail, you can enjoy the true feel, response, and sound of the harpsichord.

**Experience the beautiful sound of musical antiquity.**

The C-30 comes with two types of classic harpsichord tones: French and Flemish. You can switch between these with the touch of a button. Four buttons, 8' I (back), 8' II (front), 4' (an octave higher), and lute (buff muted), are available for each tone. These tones can be played independently or together. The C-30 also features with tones from two types of positive organs and an early version of a fortepiano. By playing Baroque pieces by composers such as Bach and Hendel in harpsichord or organ tones, for example, or romantic pieces by composers such as Mozart and Beethoven in a fortepiano tone, you can experience the musical magic of those specific periods. The C-30 also comes equipped with a beautiful celesta tone.

**Explore new musical horizons with the harpsichord.**

The C-30 features a "dynamic harpsichord" tone that allows players to perform in ways that were previously unthinkable, such as playing soft or loud, controlling the resonance with a damper pedal, and legato, all without compromising the delicate tonal characteristic of the instrument. This feature, made possible by digital technology, will surely motivate many players to broaden the scope of the harpsichord in modern music.

**Easily switch between pitches and classical temperaments that  
are characteristic of classical instruments.**

The C-30 supports pitches that are characteristic of classical instruments, including Baroque and Versailles pitches. It also supports five instruments, including classical temperaments such as Werckmeister and Kirnberger. Since you can switch temperaments with the touch of a button, you can instantly change the instrument to suit the piece you're playing.



**Adjustable volume lets you blend well with ensembles and  
modern instruments.**

With its dedicated volume control, the C-30 lets you instantly adjust the volume to suit each environment. Even at full volume, the sound quality is crisp and clear. The built-in speaker can fill a medium-sized hall with beautiful sound.

**The main unit and stand detach for easy portability.**

The C-30 is lightweight. The main unit weighs 25kg and the stand weighs 13kg. The stand is detachable, making the C-30 easy to carry from venue to venue.

**Adjust the sound to your personal preference.**

Add beautiful reverberations like you would hear in a church or salon, change the brightness of tone, and adjust the resonance. By switching between two sets of tones with the pedal, you can change the combination of strings — just as you would on a harpsichord with stepped keyboards. You can also combine tones from two different instruments.

# Beloved Classical Instruments Under Your Fingertips. The Romantic Past is Reborn with Roland Technology.

Although classical acoustic instruments are admired for their beautiful, delicate tones, they are also fragile to maintain and transport, and are out of reach financially for many musicians. Roland Classic Series instruments puts a polish on the allure of these instruments and brings them back to life in the modern age with state-of-the-art digital technology that's effortless to maintain, easy to transport, and cost effective. Their excellent sound quality and playability, and discerning design give musicians the satisfaction of owning the instrument of their dreams.

## A treasured collection of coveted classical sounds.

In the past, a great deal of preparation was needed before a classical instrument could be played. You had to carefully determine its placement and fine-tune its tone. With the Roland Classic Series instruments, all you have to do is simply plug the instrument in to enjoy high-quality sounds instantly. Each Roland Classic Series instrument is outfitted with a coveted collection of authentic, high-quality sounds. Best of all, you can switch from sound to sound with simple button presses.

## No tuning needed. Play with perfect sound, anytime, anywhere.

Acoustic classical instruments are delicate instruments that typically require careful tuning and maintenance. The Roland Classic Series instruments are based on digital technology that requires no tuning. Enjoy exquisite tones, authentic touch, and perfect tuning anytime. Since there's no concern for detuning caused by temperature, humidity, or transportation, you can use these instruments on damp or rainy days, in open spaces without air conditioning, or on hot, brightly lit stages.

## No knowledge of classical instruments required. Easy to play, even if you are a digital-instrument novice.

All models are easy to use. You can begin playing instantly, even if you are not familiar with classical or digital instruments. Select sounds and adjust tone and tuning quickly and easily.

## Switch classical instrument pitches and temperaments with a touch of a button.

All models support classical pitches, such as the Baroque pitch (415Hz) and Versailles pitch (392Hz), as well as classical temperaments such as Werckmeister and Kirnberger. Switch tunings with a touch of a button to play pieces in the correct tunings used during the periods the pieces were written. Tuning function can also correspond to the pitch, such as 420Hz or 465Hz.

## Lightweight and compact, with a beautiful, timeless look.

These instruments look and sound wonderful wherever they are placed. Their space-saving footprints make it easy to place in rooms large and small. Play in a wide variety of locations — from living rooms and lesson studios to cathedrals. The warm, wood finishes are exquisitely detailed, adding a sense of elegance to any room. Significantly lighter than acoustic instruments, Roland Classic Series instruments are convenient to transport. They are ideal for concerts, recitals, or any performances large or small.

## Complete volume control and support for headphones.

Adjust the volume to suit any environment. Instantly increase the output to match other instruments. The possibilities are endless. Plug in headphones and practice in complete privacy. The sound quality remains perfect whether you adjust the volume up or down, or play through headphones.

## Temperaments

Over the centuries, a variety of temperaments have been developed for musical instruments. As a result, the beautiful harmony in pieces of music written in different historical time frames can be played faithfully to the vision of their composers. With the Roland Classic Series instruments, you can easily switch between five temperaments that are often used in classical instruments such as pipe organs and acoustic harpsichord.

**Equal temperament:** This temperament equally divides each octave into 12 notes, just as in present-day pianos. This allows the notes to retain the same harmonic relationship even when transposed.

**Werckmeister:** This well-balanced temperament allows distinct harmonic relationships between notes. Somewhat similar to equal temperament, Werckmeister is relatively easy to use, and was widely used during Bach's time.

**Kirnberger:** While similar to Werckmeister, the harmonic relationships between notes are more distinct from each other. Transposition is somewhat difficult in this temperament. This temperament was used after Bach's time.

**Vallotti:** Similar to Werckmeister, this temperament is also close to equal temperament, with few restrictions on transposition.

**Meantone:** This temperament is often used for pipe organs. While it produces beautiful major thirds, only a limited number of key signatures can be played in this temperament. Consequently, transposition is quite restricted.

## Option



## Customize your C-30 / C-230 with a picture board or decorative panel.

In addition to the picture board included with the C-30 and decorative panel included with the C-30 and C-230, optional picture boards and decorative panels are available. Customize the look of your C-230 or C-30 to suit your aesthetic taste and the ambience of your room.

### Picture board OP-C30PB series

(for C-30 only) This is attached to the inside of the keyboard lid.



● OP-C30PB01 (Angel)



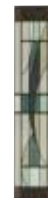
● OP-C30PB02 (Latin)

### Decorative panel OP-C30DP series

(for C-230 and C-30) This is attached to both sides of the stand.



● OP-C30DP01 (Grape)



● OP-C30DP02 (Line and circle)

# Classical instruments bring historical elegance to the modern age.

The classical instruments that inspired the Roland Classic Series instruments were used in Europe during the middle ages, renaissance, and Baroque periods. Each instrument was handmade by master instrument makers and produced delicate, expressive tones. The classical-music movement that spread across Europe in the 20th century attracted large numbers of musicians around the world to classical instruments.

## Pipe organs

The pipe organ, often referred to as the "king of instruments," produces its distinct sound by pumping air through a multitude of pipes. Its origins are ancient and can be traced back, according to some accounts, to pan pipes, an instrument that appears in Greek mythology. Pan pipes were made by tying reeds together. By the 3rd century B.C., the "hydraulus" — from which the pipe organ originated — was invented. These instruments were installed in Roman amphitheaters to add excitement to competitions. Pipe organs eventually became popular as an instrument for churches. They were also used to provide music for balls hosted by aristocrats, which spread throughout Europe during the renaissance period. The use of pipe organs peaked during the 17th and 18th centuries. Their styles varied depending on period and region. Representative types of organs include the "Baroque organ," a type of organ that was used during the peak period and on which Bach composed many masterpieces, and "romantic organs" and "symphonic organs, both of which were designed in the 19th century to perform concerts. They captivated audiences with majestic sounds that rivaled orchestras.

### Tone

Pipe organs — more than meets the eye. A large number of pipes, large and small, are arrayed behind its facade. Some organs have more than 30,000 pipes. A single pipe can only produce a single tone. The pipes that the organist chooses to play are selected by a stop, and are played as a combination. While there are countless types of pipe-organ tones, they can be largely categorized as below:

**Principal tones:** These tones, which resonate very well, represent the standard "pipe organ" tones.

**Flute tones:** These are soft and warm tones, and are produced on thicker pipes.

**String tones:** These are tones that resemble string instruments, such as violins and cello, and are produced on thinner pipes.

**Reed tones:** These are loud and assertive tones, and resemble trumpets and oboes.

## Harpsichord

The harpsichord (a.k.a. cembalo or clavecin) is a keyboard instrument that produces sound when a string is plucked. This instrument is known as the harpsichord in English, the cembalo in German and Italian, and clavecin in French. Developed in 14th- and 15th-century Europe, these instruments competed with pipe organs as the top keyboard instrument until the development of the piano in the 18th century. With their extremely delicate and beautiful tones, they blend well with other instruments. So naturally, the harpsichord was used widely for solo performances and accompaniment, as well as in ensembles. The harpsichord found itself in the limelight once again when the classical instrument movement gained momentum in the 20th century. Its popularity continues to this day. Many versions of the harpsichord were made in different regions and during different periods. These versions include French, Italian, Flemish, and Virginal. Each instrument had characteristics that were distinct from the others. Take the keyboard for example. The size and number of keys, as well as the touch were very different from each other.

### Tone

Because the amplitude of acoustic harpsichord changes only very slightly whether you hit the key forcefully or gently, designers directed their efforts toward developing features that created variations in tone, such as mechanisms for plucking multiple strings in a single keystroke or softening the tone with a muting function. The C-30 comes with the following tones that are typically found in large harpsichord with 2-stepped keyboards.

**8' I:** These "back" tones are soft and thick, and constitute the basic sound.

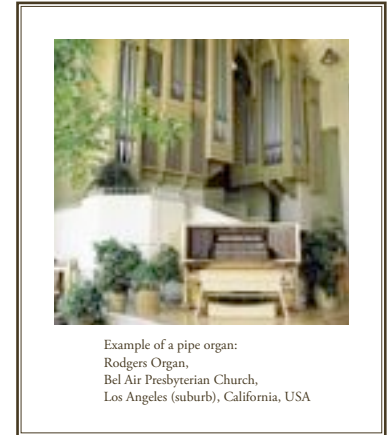
**8' II:** These tones are produced by plucking near the end of the strings to create brighter tones with a unique character. These tones are called "front."

**4':** These tones are an octave higher, and are used together with the 8' tones to create colorful sounds.

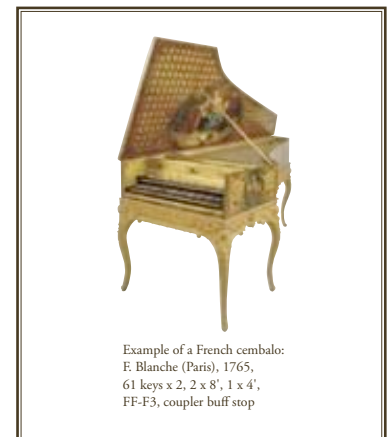
**Lute:** Resembling the sound of lutes, these tones are made by muting the 8' strings with felt buffs. Lutes were the precursors to guitars.

## Fortepiano

Fortepiano is the generic name for early pianos. The name comes from the Italian description "gravecembalo col piano e forte" or "harpsichord with soft and loud." Around the year 1700, Italian harpsichord maker Cristofori envisioned creating an instrument that could express soft and loud tones, and invented a method of producing sound by hitting the string with a hammer. Working with John Broadwood and Sons of England, his invention was released after much trial and error. While this instrument was capable of varying sound volume based on the player's touch just as with the modern piano, the new instrument produced a softer sound with less sustain. The tones differed depending on the pitch range. These variations in tone — elegant and textured bass tones, clear and glistening high tones, and mid-range tones that, according to some, resemble the human voice — enabled performances that were rich and expressive. Early fortepianos had small keyboards, typically with a range of 5 to 5-1/2 octaves. Therefore, piano pieces penned during this period by composers such as Beethoven and Mozart were written within this range. While the fortepiano fell out of favor after the development of the modern piano in the mid-19th century, this instrument regained popularity after the rise of the harpsichord in classical music during the late 20th century. Fortepiano performances are now held around the world.



Example of a pipe organ:  
Rodgers Organ,  
Bel Air Presbyterian Church,  
Los Angeles (suburb), California, USA



Example of a French cembalo:  
F. Blanche (Paris), 1765,  
61 keys x 2, 2 x 8', 1 x 4',  
FF-F3, coupler buff stop



Example of a fortepiano:  
John Broadwood and Sons (London), c.a. 1802,  
69 keys, English action,  
FF-C, A=408Hz

From the "European Keyboard Instruments" section of the "Illustrated Catalog of Musical Instruments" courtesy of the Hamamatsu City Museum of Musical Instruments.  
Harpsichord and fortepiano photos courtesy of the Hamamatsu City Museum of Musical Instruments.

C-330 List of Voice sound (Stop)

MANUAL I

Tablet	VP1	VP2	VP3
Bourdon 16'	Violine 16'	Principal 16'	Quintaton 16'
Principal 8'	Open Diapason 8'	Montre 8'	Prinzpal 8'
Gemshorn 8'	2nd Diapason 8'	Voce umana II 8'	Aeoline 8'
Gedackt 8'	Clarabella 8'	Flûte harmonique 8'	Bourdon 8'
Octava 4'	Principal 4'	Flûte à bec 4'	Fugara 4'
Quinte 2-2/3'	Twelfth 2-2/3'	Nazard 2-2/3'	Quintaden 8'
Superoctav 2'	Fifteenth 2'	Doublette 2'	Piccolo 2'
Mixtur IV	Tierce Mixture V	Cornet V	Rauschquint IV
Trumpet 8'	Waldhorn 8'	Trompette 8'	Cromorne 8'

MANUAL II

Tablet	VP1	VP2	VP3
Still Gedackt 8'	Stopped Diapason 8'	Bourdon 8'	Rohrgedackt 8'
Spitz Geigen 8'	Geigen Diapason 8'	Salicional 8'	Viola 8'
Viola Céleste II 8'	Flute Céleste II 8'	Voix céleste II 8'	Schwebung II 8'
Principal 4'	Unda Maris II 4'	Prestant 4'	Muted Viols II 4'
Nachthorn 4'	Solo Flute 4'	Flûte traversière 4'	Spillflûte 4'
Nasat 2-2/3'	Twelfth 2-2/3'	Nazard 2-2/3'	Quinte 2-2/3'
Piccolo 2'	Wald flute 2'	Doublette 2'	Schwegel 2'
Sesquialtera II	Dolce Cornet II	Tierce 1-3/5'	Larigot 1-1/3'
Mixtur III	Cymbale III	Plein jeu IV	Siffiote 1'
Schalmei 8'	Oboe 8'	Hautbois 8'	Trompette 8'

PEDAL

Tablet	VP1	VP2	VP3
Principal 16'	Open Wood 16'	Contrabass 16'	Violine 16'
Subbass 16'	2nd Subbass 16'	Bourdon 16'	Quintaton 16'
Octava 8'	Octave 8'	Montre 8'	Violoncello 8'
Bourdon 8'	Stopped Flute 8'	Flûte 8'	Still Gedackt 8'
Choral Bass 4'	Fifteenth 4'	Flûte de bois 4'	Quintflûte 10-2/3'
Posaune 16'	Trombone 16'	Bombarde 16'	Bassoon 16'
Trompette 8'	Trumpet 8'	Trompette 8'	Dulzian 8'
Klarine 4'	Cornet Clarion 4'	Clairon 4'	Schalmei 4'

USER/MIDI Couplers

<p><b>[Organ]</b>                  PRINCIPAL 32', CONTRA BOURDON 32', SPITZ PRINZIPAL 16', DULCIANA 16', CELLOS CÉLESTES II 16', BACH PRINCIPAL 8', GAMBA 8', DULCIANA 8', GROSS FLUTE 8', UNDA MARIS III 8', PRINCIPAL 4', CHIMNEY FLUTE 4', QUINTE 2-2/3', NAZARD 2-2/3', GEMSHORN 2', TIERCE 1-3/5', LARIGOT 1-1/3', SEPTIEME 1-1/7', SIFFLÔTE 1', JEU DE CLOCHETTE II, SCHARF II, PEDAL GRAND MIXTUR VI, GRAVE MIXTUR IV, TIERCE FOURNITURE VI, GRAND MIXTUR VIII, CONTRE BOMBARDE 32', CONTRE BASSON 32', CONTRE TROMPETTE 16', RANKETTE 16', TRUMPET 8', TROMPETTE 8', STATE TRUMPET 8', DULZIAN 8', BARYTON 8', COR D'AMOUR 8', VOX HUMANA 8', CLARION 4', CLAIRON 4', FLUTE CÉLESTES IV 16+4', CÉLESTES IV 16+4', CÉLESTES VI 16+8+4', VOXES II 16+8, VOXES II 16+4, TIBIA 8', TIBIA 4', VDO CELESTE 8', VDO CELESTE T 8', TUBA T 8', CORNOPEAN T 8', TIBIAS 16' + 8' + VOX 16' + 8', FULL TIBIAS+STRS 8'+4',</p>	<p>VOX &amp; STR 16' + TIB 2' + QUINT, VOX 16'+8'+CELESTES 8', TIBIAS 8', 4' + STR, TIBIAS 8', 4' + STR + VOX, TIBIAS 8', 4' + TUBA 8', TIBIA 4' + CELESTES 8', TIBIAS 4', 2' + STR 16', 8', TIBIA 4' + KINURA 8', STR 8' + TIBIAS 2' + GLOCKEN, TIBIA 4' + GLOCKENSPIEL</p>
<p><b>[Orchestra]</b>                  ORGAN HARP 8', CHRYSOGLOTT 4', TUBULAR BELL, ORCHESTRAL OBOE, ORCHESTRAL CLARINET, ORCHESTRAL FLUTE, ORCHESTRAL TRUMPET, HARPSICHORD 8 I, HARPSICHORD 8 II, HARPSICHORD 4, HARPSICHORD LUTE, HARPSICHORD 8+8, HARPSICHORD 8+4, CELESTA</p>	

Specifications

C-330	
Keyboard	Manual-I : 61 keys (C2-C7, Tracker action ) Manual-II: 61 keys (C2-C7, Tracker action ) Pedal: 30 keys (C2-F4, Parallel Concave)
Stops	Total 33 Stops Manual-I: 9 Tablets + 2 (User/MIDI Couplers) Manual-II: 10 Tablets + 2 (User/MIDI Couplers) Pedal: 8 Tablets + 2 (User/MIDI Couplers) 4 Voice Palette each: Total 108 voices USER/MIDI Voice: 74 Voices Total: 182 Voices
Coupler	Manual Coupler: I/P, II/P, III Melody Coupler: 1 (Piston) Bass Coupler: 1 (Piston) USER/MIDI Coupler: 6 (2 for each division)
Tremulant (Tablet)	Manual-I, Manual-II 1 each : Total 2
Registration	Piston: 5 x 20 Memory Banks Total 100
Piston	Total 15: SET, 1 - 5, M-, M+, NEXT, BASS, MEL, STOP, PLAY/PAUSE, REC, 0
Effect	RSS Reverb
Controls	4 Knobs: [Master Volume] knob, [Reverb] knob, [Satellite Volume] knob (Select/Menu), [Value/Exit Menu] knob
Key Transpose	-6 to +5 (semitone steps)
Temperament	9 types (Equal, Werckmeister III, Kirnberger I/III, Vallotti, Meantone D#/Eb, Pythagorean, Modern Bach)
Pitch Settings	4 types (392 Hz / 415 Hz / 440 Hz / 465 Hz)
Song Recorder	Tracks: 1, Tempo: Quarter note = 20 - 240, Piston: STOP, PLAY/PAUSE, REC
Storage Media	USB Flash Memory
Pedal	Expression Pedal: 1, Kick Switch: 2
Speakers	Woofer 20 cm x 2, Tweeter 5 cm x 2, Satellite Speakers 12 cm x 2
Connectors	Phones jack (Stereo), Output jacks ( L/Mono, R ), Input jacks ( L/Mono, R ), MIDI connectors (In, Out), External Memory connector (USB Flash Memory connector), Satellite Speaker (Dedicated Connector), AC Inlet
Power Supply	AC 117 V, 230 V, 240 V
Power Consumption	120 W
Cabinet Finish	Simulated Light Oak
Dimensions (including the stand)	Console (included Music Rest): 1,270 (W) x 537 (D) x 1,319 (H) mm / 50 (W) x 21-3/16 (D) x 51-15/16 (H) inches Pedalboard: 1,184 (W) x 791 (D) x 185 (H) mm / 46-5/8 (W) x 31-3/16 (D) x 7-5/16 (H) inches Total: 1,270 (W) x 910 (D) x 1,319 (H) mm / 50 (W) x 35-7/8 (D) x 51-15/16 (H) inches Satellite Speaker: 179 (W)x91 (D)x144 (H)mm / 7-1/16 (W) x 3-5/8 (D) x 5-11/16(H) inches Bench: 1,350 (W) x 294 (D) x 640 to 655 (H) mm / 53-3/16 (W) x 11-5/8 (D) x 25-1/4 to 25-13/16(H) inches
Weight	Console: 81.5 kg / 180 lbs (not include Satellite speakers 1.4 kg / 3.1lbs X2) Pedalboard: 25.5kg / 57 lbs Total: 109.8 kg / 243 lbs Bench: 20.0 kg / 44 lbs
Accessories	Satellite Speakers (with two screws for wall mounting), Power Cord, Pedalboard (PDB-11PC) *separate carton, Bench (BNC-33) *separate carton, Cover (included in the bench), Owner's manual, Quick manual, Demo song list, Assembling leaflet (included in the bench & Pedalboard)
Option	Stereo Headphones, USB Flash Memory M-UF1G/M-UF2G

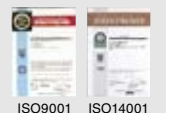
C-230	
Keyboard	61 Keys
Tones	36 organ voices (9 tilt tabs x 4 voices), 8 organ bass sounds (2 tilt tabs x 4 voices), 4 harpsichord sounds (8', 8'II, 4', Lute), 2 fortepiano sounds (I, II), 18 other sounds (can be added to the organ voices)
Effects	Reverb
Controls	Volume Knob, Reverb knob, Satellite Volume Knob
Key Transpose	-6 to +5 (in semitones)
Temperament	5 types (Equal, Werckmeister, Kirnberger, Vallotti, Meantone)
Pitch Settings	440Hz (default setting), 415Hz, 392Hz
Registrations	4
Song Recorder	1 track
Storage Media	USB Memory
Speakers	12 cm x 2 (full range), 5 cm x 2 (tweeter), 12cm x 2 (Satellite Speakers)
Connectors	Phones Jack (Stereo), Output Jacks (L / MONO, R), Input Jacks (L / MONO, R), MIDI Connectors (IN, OUT), SUSTAIN Jack, EXPRESSION PEDAL Jack, SATELLITE R, L Sockets, DC IN Connector, USB Memory Connector
Power Supply	DC 12v (AC Adaptor)
Power Consumption	39W (AC 110 V), 39W (AC 117 V), 39W (AC 230 V), 39W (AC 240 V)
Cabinet Finish	Simulated Mahogany
Dimensions	(with music rest) 935(W) x 477(D) x 964(H) mm / 36-13/16(W) x 18-13/16(D) x 38(H) inches (without music rest) 935(W) x 388(D) x 790(H) mm / 36-13/16(W) x 15-5/16(D) x 31-1/8(H) inches Satellite Speaker: 179 (W)x91 (D)x144 (H)mm / 7-1/16 (W) x 3-5/8 (D) x 5-11/16(H) inches
Weight	30.0kg / 66 lbs. 3oz
Accessories	Owner's Manual, AC Adaptor PSB-7U(S), Power Cord, Music Rest, 2 x Satellite Speakers, 2 x Decoration Panels
Options	Bench BNC-29, EV-Series Expression Pedal, DP-Series Sustain/Hold Pedal, Decoration Panel OP-C30DP01/02, USB Flash Memory M-UF1G/M-UF2G

C-30	
Keyboard	61 keys (F scale, harpsichord action mechanism)
Tones	Harpsichord x 4 (8' I, 8' II, 4', Lute, each with 4 variations: French type, Flemish type, Forteplano, Dynamic Harpsichord), Organ I, Organ II/Celesta
Effect	Reverb
Controls	Volume knob, Reverb knob, Tone knob
Key Transpose	-6 to +5 (semitone steps)
Temperament	5 types (Equal, Werckmeister, Kirnberger, Vallotti, Meantone)
Pitch Settings	440Hz, 415Hz, 392Hz
Pedal	Damper / Tone change
Speakers	12 cm x 2, 8 cm x 2
Connectors	Phones Jack (Stereo), Output Jacks ( L/Mono, R ), Input Jacks ( L/Mono, R ), MIDI Connectors (In, Out), Pedal Jack, AC Adaptor Jack
Power Supply	AC Adaptor
Power Consumption	25 W (AC 117 V), 25 W (AC 230 V), 25 W (AC 240 V)
Cabinet Finish	Simulated mahogany
Dimensions	1100 (W) x 380 (D) x 830 (H) mm / 43-5/16 (W) x 15 (D) x 32-11/16 (H) inches (Lid closed), 1100 (W) x 450 (D) x 1170 (H) mm / 43-5/16 (W) x 17-3/4 (D) x 46-1/16 (H) inches (Lid opened)
Weight	25 + 13 kg : Total 38 kg ( 84 lbs) (including the stand)
Accessories	Owner's Manual, Quick Manual, Score for original demo songs, AC Adaptor, Power Cord, Music Stand, Damper Pedal (DP-10), Picture Board, Decoration Panels
Options	Bench (BNC-29), Picture Board (OP-C30PB01/02), Decoration Panel (OP-C30DP01/02)

Ensuring high quality while protecting the environment: Roland is ISO9001 and ISO14001 certified

At Roland, several group companies have obtained ISO9001 certification. In addition, in January 1999, Roland also received ISO14001 international environmental management system certification. We're actively seeking ways to maintain harmony with the environment.

(ISO-International Standardization Organization: an organization for the promotion of standardization of international units and terms. They provide different categories of certification: ISO9001 Series certification is a product quality certification for products that undergo a certain level of quality control from the design stage to the after service stage; ISO14001 Series certification is for environment-related standards. Each member of the Roland Group is striving to obtain certification.)



Visit us online at [www.Roland.com](http://www.Roland.com)

All specifications and appearances are subject to change without notice. All trademarks used in this catalog are the property of their respective companies.